

# First Impressions



## Coffeyville, KS

Kansas State University Extension

- Lyons applied for First Impressions.
- Coffeyville agreed to be their partner.
- Visitors were trained on what to look for during their visits and how to fill out their assessment reports.
- One visitor came Saturday, August 16;  
3 on Tuesday, August 19.
- Photos taken on November 25.
- Results presented on February 26, 2026.
- Coffeyville uses the results for further discussion and action plans.

## Community Feedback:

How does a first-time visitor view my town?

Evaluate successes,

Set goals and priorities for next steps.



**Curiosity: A strong desire to know or learn something.**

*-Oxford Living Dictionary*

# Why: First Impressions?

- **If you don't agree with the observation:**

*Be curious:*

Why does the visitor see it this way?

Is the observation worth considering?

What can we do to change it- or the perception?

**Curiosity: A strong desire to know or learn something.**

*-Oxford Living Dictionary*



***We need to change the narrative about rural.***

**Ben Winchester,  
Senior Research Fellow,  
U of MN**



*Ben was our guest on the  
**First Friday e-Calls.***

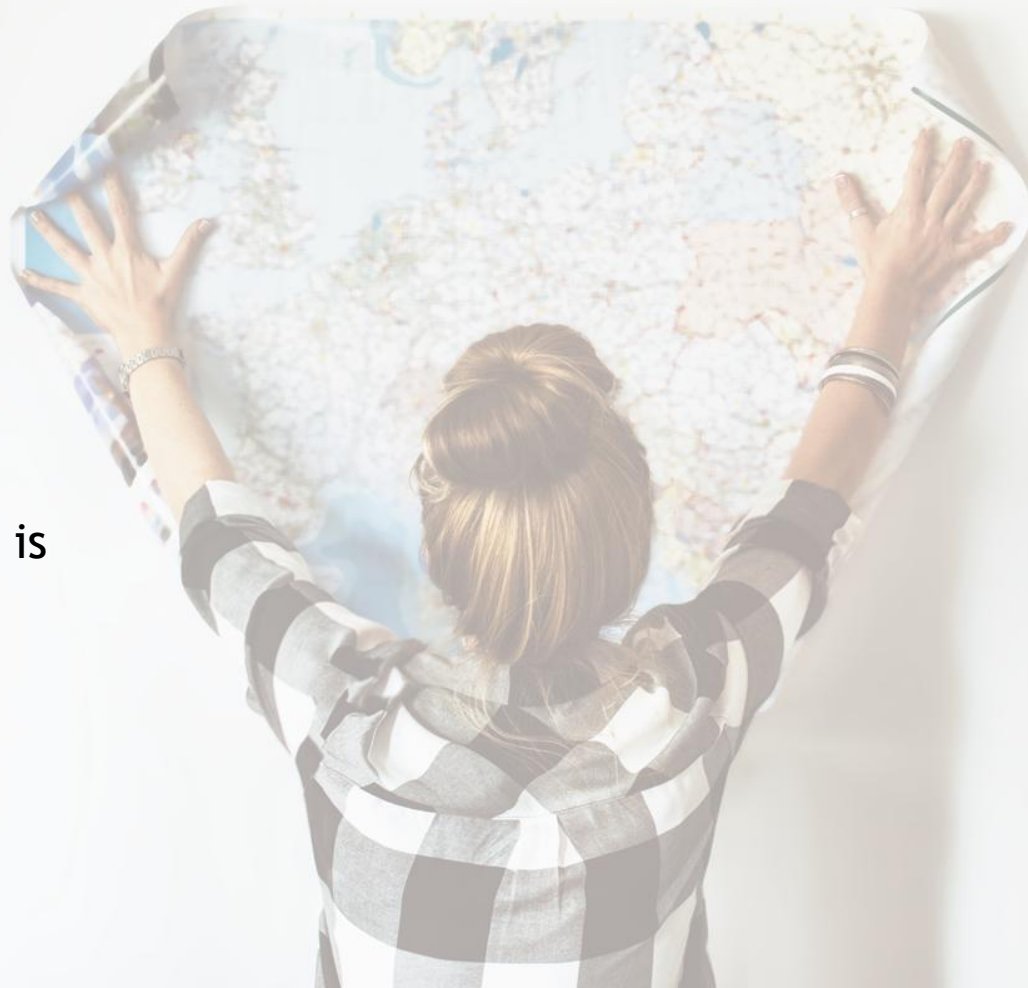
*See the recordings at:*

*<https://www.ksre.k-state.edu/program-areas/supporting-communities/first-friday-ecalls/>*



People research a number of places before they move to a rural town.

Rural is in the middle of *everywhere*.



Brain Gain  
(30-49 year olds  
moving to rural) is  
a “new trend”  
that has been  
happening since  
the 70’s

Approximately 14% of Kansans moved during the previous year.



Communities can work together to attract newcomers and create quality of life for everyone.

- Simpler pace of life,
- Safety and security,
- Affordable housing,
- Outdoor recreation,
- Quality schools

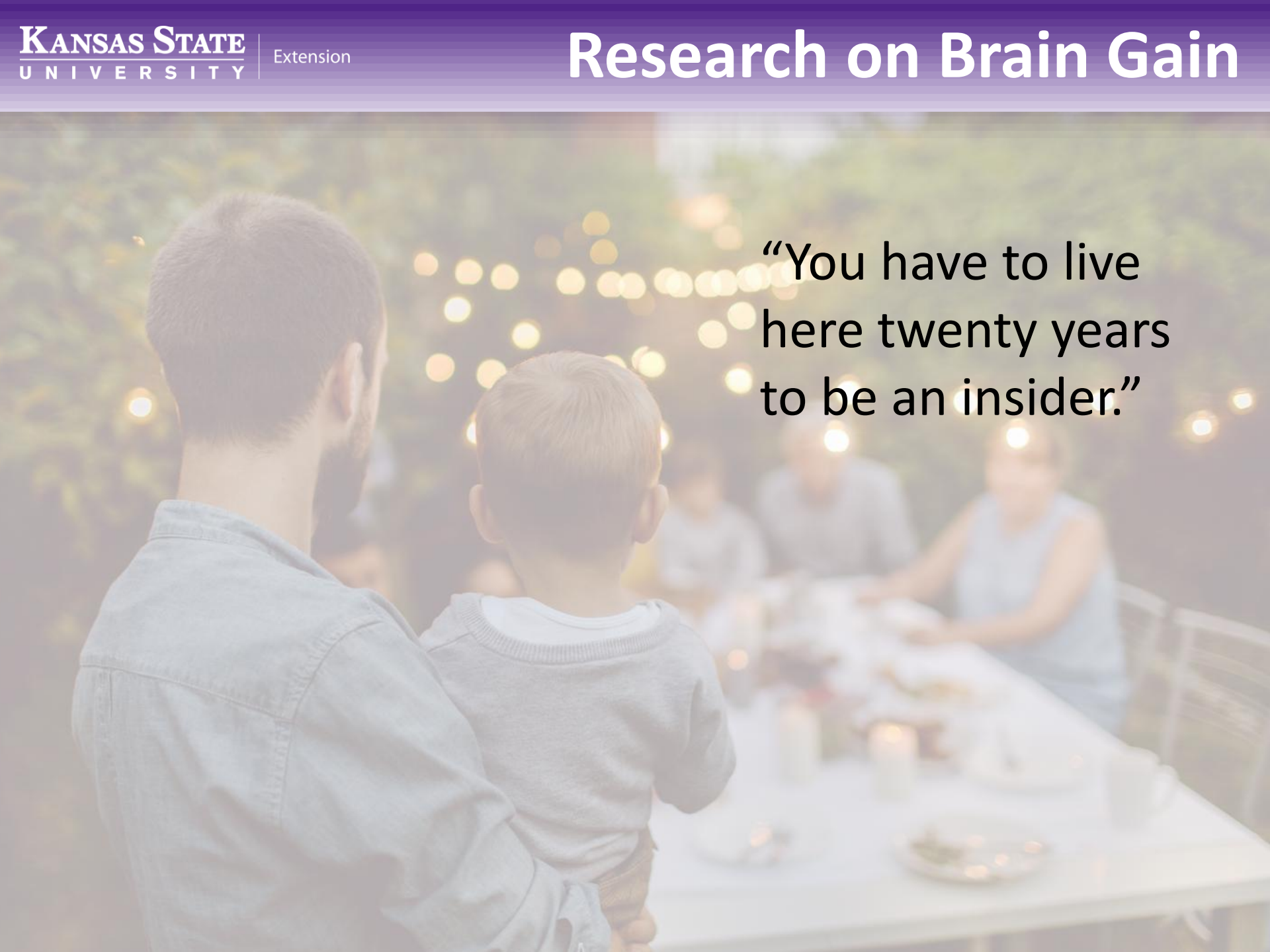
*“A job” isn’t in the top 10 reasons.*

# Research on Brain Gain

“In small towns everyone knows each other.”

*false*

*Get to know each other, invite them to a newcomers' meal.*


A photograph of a man and a young boy in the foreground, seen from behind, looking towards a group of people dining at an outdoor table at night. The scene is illuminated by warm, bokeh-style string lights, creating a soft, intimate atmosphere. The man is wearing a denim shirt, and the boy is wearing a grey sweater. The background shows several people seated at a table with a white tablecloth, engaged in conversation and eating. The overall mood is warm and social.

**“You have to live here twenty years to be an insider.”**

A photograph of a man and a young boy in the foreground, seen from behind, looking towards a group of people sitting at a table outdoors at night. The scene is illuminated by warm, glowing string lights, creating a bokeh effect in the background. The man is wearing a light blue denim shirt, and the boy is wearing a grey sweater. The people at the table are out of focus, but a woman in a light blue sleeveless top is visible. The overall atmosphere is warm and inviting.

***Welcome!***  
***We're glad you're here***

# Research on Brain Gain

A photograph of a man and a young boy standing together, looking out over a town square at night. The man is on the left, wearing a denim shirt, and the boy is on the right, wearing a grey sweater. They are both looking towards a table set for a meal in the foreground, which is out of focus. In the background, there are string lights and other people sitting at tables, creating a warm, community atmosphere.

If you bring 9 people to a 900-person town every year, in 10 years you'll have a 10% increase.

75% of rural homeowners are Baby Boomers and older. 30% are over 75.

Housing will be freed up as the baby boomers retire and move closer to medical services.

Rural communities need retirement housing (not nursing facilities, but maintenance free) to retain seniors.





# Data

**Coffeyville, KS**

Kansas State University Extension

- 2024 KS Certified Population: 8,545 ↓ 12% since 2015
- Median household income: \$45,670 **\$72,639**
- High school or GED 87.6% **91.9%**
- At least a B.S. Degree 15% **35.2%**
- Median Age: 39.5 years **37.2 years**
- Persons 65 and Over 17% **17%**

- **Poverty rate** 21.1% 11.5%  
(% of people below poverty line)

## Race/Ethnicity

White: 61%	American Indian: 1%
Black: 10 %	Native Hawaiian/Other Pacific Islander: 0%
Asian: 0%	Two or more races: 10%
Other: 0%	Hispanic or Latino: 17%

**In Coffeyville, 15% of the population moved since last year. In Kansas, 14.8%**

*What would it take to attract them to Coffeyville?*

Blue: [Kansas Comparison Data](#)

(Source: <https://censusreporter.org/profiles/06000US2012514600-coffeyville-city-montgomery-county-ks/>)

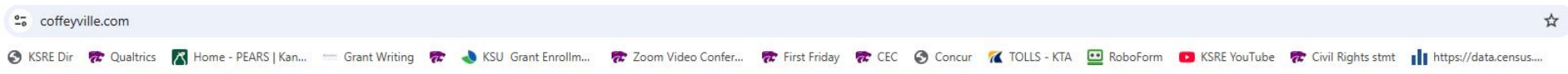


# Social Media & Website

**Coffeyville, KS**

Kansas State University Extension

Website: <https://www.coffeyville.com/>



[GOVERNMENT](#)

[DEPARTMENTS](#)

[HISTORY & VISITING](#)

[LIVING & DOING BUSINESS](#)

[HOW DO I...](#)



Search...



[ONLINE PAYMENTS](#)



[EMPLOYMENT](#)



[REPORT A CONCERN](#)



[AGENDAS & MINUTES](#)



[GOVWELL - LICENSING & PERMITS](#)



[WATCH A MEETING](#)

- The City website was easy to navigate and find information.
- Both City and Chamber websites were the first listings on the search.
- The inclusion of “Coffeyville Talk” gave the impression that the community has a sense of place and belonging.
- I did not find information on community organizations.
- A good web presence. The pictures and descriptions make the community seem exciting and interesting.
- We were able to schedule a tour of the Brown Mansion, the website provided good information.

Website: <https://www.coffeyville.com/>

The screenshot shows the website's navigation menu with the following categories and links:

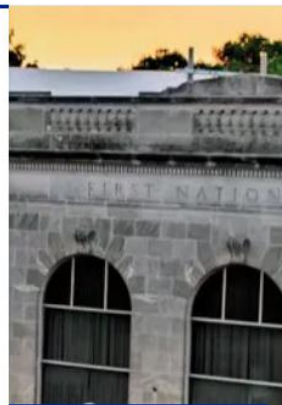
- GOVERNMENT**
- DEPARTMENTS**
- HISTORY & VISITING**
- LIVING & DOING BUSINESS**
- HOW DO I...**

Below the navigation menu, there is a dark blue sidebar with the following sections:

- OPEN THE LIVING & DOING BUSINESS PAGE**
- BIDS & RFPS**
- BUILDING PERMITS**
- CHAMBER OF COMMERCE**
- COFFEYVILLE TALK**
- COMMUNITY**
  - Churches (PDF)
  - Farmers' Market
  - Landlord List (PDF)
  - Public Library
  - Realtors / Rentals (PDF) ← **White arrow pointing to this link**
  - Register Your Pet
  - Schools
  - Who to Call
- COMMUNITY IMPROVEMENT DISTRICT**
- DEMOGRAPHICS**
  - Crime Statistics
  - Major Employers
  - Sales Tax & Local Sales Tax Collections
  - Weather Statistics
- DRIVER'S LICENSE & VEHICLE REGISTRATION**
- ECONOMIC DEVELOPMENT**
- MAP OF COFFEYVILLE (PDF)**
- PUBLIC SAFETY**
  - Animal Control
  - Burning Guidelines
  - Curfew
  - Report a Concern
  - Storm Shelters
  - Tornado Siren Sounding Policy

Realtors/Rentals page was a great inclusion; it is linked in more than one place, including the Chamber page. It might need updated since it is dated 2019.

Website: <https://coffeyvillechamber.org/>



## About Us

- Relocate or Invest
- Community Information
- Visit Coffeyville
- Job Opportunities
- Attractions
- Education
- Government
- Healthcare
- History
- Parks & Recreation
- Real Estate
- Who to Call

The mission of the Coffeyville Area Chamber of Commerce is to enhance economic vitality of the Coffeyville area.

Upcoming Events

- Community Events Calendar was impressive.



Q Select Category: All Categories ▾

View Event Details

February, 2026 📅						
Sunday	Monday	Tuesday	Wednesday	Thursday	Friday	Saturday
1 ● Beginner Line Dance Classes 1:30 PM	2	3 ● CCC Humanities Project 6:30 PM	4 ● Business Over Breakfast 7:30 AM	5 ● Taste Of Soup 11:00 AM	6	7 ● 2026 Coffeyville Trivia Nights 6:00 PM
8	9	10 ● CCC Humanities Project 6:30 PM	11	12 ● BINGO at Cedar Bluff Camp 6:00 PM	13	14
15	16	17 ● St. Paul's Episcopal Church Pancake Day 5:00 PM ● CCC Humanities Project 6:30 PM	18	19	20	21
22	23	24 ● Montgomery County Area Youth Entrepreneurship Challenge 9:00 AM ● CCC Humanities Project 6:30 PM	25 ● Family Bingo Night 4:30 PM	26 ● First Impressions 5:30 PM	27	28 ● Love At First Laugh 6:00 PM

## Facebook <https://www.facebook.com/cityofcoffeyville>

- The Facebook page is frequently updated and very informative, specifically the city manager's interview with the county appraiser and the videos with Ashley Tatman.



### City of Coffeyville

13K followers • 114 following

The City of Coffeyville is located in southeast Kansas - the heart of America.

Public figure



Learn more

Message

Follow

All About Photos Followers Mentions More ▾





# 5-Minute Impression

**Coffeyville, KS**

Kansas State University Extension

# “Five-Minute” Impression

- My initial 5-minute impression was mixed.
- The nice welcome sign on the east is on the opposite side we expected to see it; easy to miss it. The sign on the west was attractive and very visible.



- I noticed all the open green space along the highway and saw a number of driveway entrances without structures. As I suspected, Coffeyville had a large flood in 2007 with much damage. We saw the scars.
- Railroad crossings were rough and made me nervous about car damage.
- I was surprised at the number of dilapidated properties, both residential and commercial.



# Downtown Business Area

**Coffeyville, KS**

Kansas State University Extension

The building exteriors were in decent condition, though there were some exceptions.

While walking I liked the narrower streets and wide sidewalks. It felt pedestrian oriented and safe at crossings.





Many architecturally interesting buildings.

In general, merchandise appeared to be sparse and there were limited selections in most places.



## Ashley's Quote of the Week:

“If you change the way you look at things, the things you look at change.”





## Problem?



## Opportunity?

- Several specialty stores were closed, so the ones we entered were like flea market style, pawn shop, or general merchandise.
- We ate at the soda fountain restaurant for lunch, and I was able to purchase a greeting card, which was convenient.



# Downtown Business Area



I saw two places to grab food, an antique store, consignment shop, a hardware store, a candle shop, a floral shop and a grocery store.



Some buildings were renovated and inviting like the theater and Chamber office. Others were deteriorated, vacant, and/or appeared to be used for storage. I liked the decorative street signs and the murals.



# Our Downtown Needs Help

These are the videos to turn to when your downtown needs some help, whether it's dead in the evenings or just dead! You get ways to bring more life and activity downtown, into the heart of your community.

## Improve your downtown

### The Tour of Empty Buildings



Filled 10 of 12 empty buildings

SAVE  
YOUR  
TOWN

\$9

### The Tour of Empty Buildings - video and audio

Course • 2 Lessons

Empty buildings need to be showcased, not ignored. Learn how Deb's original Tour of Empty

### Arts Build Community

Music, culture, food, ways of doing things



Building fair and unified communities

SAVEYOUR  
.town

<https://LearnTo.SaveYour.Town>

\$9

### Video Arts Build Community

Course • 1 Lesson

The arts share our cultural stories and preserve our history, address our present and create the kind of

What can you do for less than \$100?

### Cheap Downtown Placemaking Ideas



SAVEYOUR  
.town

[LearnTo.SaveYour.Town](https://LearnTo.SaveYour.Town)



\$9

### Video Cheap Downtown Placemaking Ideas

Course • 1 Lesson

Forget the expensive downtown consultants and their \$80,000

<https://learnto.saveyour.town/downtown-needs-help>

- I was greeted at all the businesses and had at least adequate customer service. At Sunflower, the staff were wonderful to interact with and clearly demonstrated pride in their community.
- The people in all the establishments we entered were very kind. They greeted us and offered help. The gentlemen at the hardware store gave us a full history of the store and its role in the Dalton Defender's story.
- Customer service was fantastic! We were greeted everywhere we visited. Staff were friendly and gave us good recommendations about where to go and many provided interesting bits of history.



# Downtown Amenities, Parking & More

**Coffeyville, KS**

Kansas State University Extension

- I particularly enjoyed the covered walkways on some of the downtown blocks. There was an architectural shade structure with concrete pillars that wasn't attached to the buildings but wrapped around the entire city block; I had never seen a structure like that before, and it was nice on an extremely hot day.





- There were a variety of benches and seating areas with trash cans and nice-looking cigarette disposal containers.
- Our team commented on the variety of types and colors of the pots. We particularly liked the wagon planter and seated planter next to the Defender's museum
- Lots of parking everywhere, much of it unused.

- I really liked the cute little musical playground with the shaded picnic table with the solar powered USB charger by the mural.





Death Alley was a cool feature with the comic book murals and painted outlines of the fallen Dalton Gang members with horseshoe tracks laying out the raid. This was a neat interactive element that really helped visualize the story.





- There were a lot of interesting and colorful murals.

# Other Retail Shopping Areas

- The commercial area along the highway seemed to be in fair to good condition. They had the normal stores that most commercial strips in Kansas have.
- We saw Walmart, a grocery store, clothing store, and Dollar Store. They were easy to access, but not particularly attractive.



Photo from Google Maps,  
Dated October 2025, downloaded 02-21-2026



# Industrial Parks Commercial

**Coffeyville, KS**

Kansas State University Extension

- To the northeast of town there is an easily identified industrial park that appears to have more room.
- The airport is next to the industrial park.



*A drive-by is not how industry will find you, check with your local Eco Devo director to make sure your site is listed on LocationOne @ Kansas Department of Commerce.*

## ***Observation:***

- “Entrepreneurs who choose to start their small businesses are responsible for 53 percent of net new jobs created in the United States every year.”
- Global marketing makes your town accessible to purchases all over the world.



# Health Care Services

**Coffeyville, KS**

Kansas State University Extension

- An attractive well-maintained hospital.
- A mental health provider.
- I noticed one dentist, but no other health care provider.



There is an excellent list of health care providers on the Chamber website. Consider reiterating it on the City website.

Senior living include Dale Apartments, Asbury Village, Gran Villas, Windsor Place, and Medicalodges.



Photos for Asbury and Medicalodges captured Oct 2025 on Google Maps, Retrieved 2-21-26



# Housing

**Coffeyville, KS**

Kansas State University Extension

- Most of the housing we saw was lower-end priced housing.
- The development on the south end of town appeared to be the newest housing development in town.
- Most of the housing we found near downtown was in very poor condition (dilapidated). It seemed like many unoccupied homes.
- I would be nervous to invest in a home for fear my neighbors would be unable or unwilling to take care of their property.





My photos captured lovely neighborhoods in addition to those needing occupancy or upkeep.



I noticed several apartment complexes spread throughout town and some downtown buildings appeared to be multi-family housing as well.



The Landlord listings on the city and chamber pages were helpful.



		Kansas
• Occupied Housing Units:	3,524	
• Owner Occupied:	68%	65.3%
• Renter Occupied:	32%	34.7%
• Vacant Housing Units:	21%	
• Average Household Size:	2.3	2.48

Blue = Kansas Comparison Data  
Data Source: [CensusReporter.org](http://CensusReporter.org)

## Kansas

- |  |           |             |
|--|-----------|-------------|
| • Average Travel Time to Work:                 | 17 mins   | 19.6 mins   |
| • Households without a computer device*:       | 280 (8%)  | 45k (3.8%)  |
| • Households without an internet subscription: | 376 (11%) | 108k (9.2%) |

\* Includes smartphones, tablets, other wireless devices

Blue = Kansas Comparison Data

Data Source: Census.gov

Housing Assessment Tool (HAT)

<https://www.kansascommerce.gov/housing/>



K-State Housing TransDisciplinary Team (TDT)

Email: [ksecv@ksu.edu](mailto:ksecv@ksu.edu)

# KANSAS

COMMERCE

## Housing Resources in Kansas

For additional funding information, visit the Housing Resources in Kansas page at [www.kansascommerce.gov/housing](http://www.kansascommerce.gov/housing).

DEVELOPERS						
Program	Type	Eligible Grantees	Description / Eligible Activities	Award Max.	Dates	Contact
<b>Startup Housing Opportunity Venture Loan (SHOVL)</b> KDC	Loan	Developers	Funds developer expenses prior to the closing of permanent financing for housing development in communities under 10,000	\$25k	Ongoing (Subject to funding availability)	<b>Kerri Falletti</b> Kerri.Falletti@ks.gov
<b>Reinvestment Housing Incentive District (RHID)</b> KDC	Reimbursement	Developers	Aids developers in building housing by financing housing development infrastructure, renovations of buildings over 25 years old in central business districts, or infill housing. RHID captures incremental increase in property taxes created by housing development projects for up to 25 years.	Varies	Ongoing	<b>Robert North</b> Robert.North@ks.gov  Questions: <b>Kerri Falletti</b> Kerri.Falletti@ks.gov
<b>Affordable Housing Program (AHP)</b> FHLB	Grant	For-profit entities/ Developers	Finance the purchase, construction, or rehabilitation of owner-and rental-occupied housing for low- or moderate-income households through subsidized advances and direct subsidies.	\$1.5 million	Application Period July 1 – Aug. 15	<b>Dustie Humphreys</b> dustie.humphreys@ fhlbtopeka.com
<b>Kansas Historic Tax Credits</b> SHPO	Tax Credit	Developers	Offered for qualified rehabilitation projects on properties listed on the State or National Register of Historic Places.	Varies	Ongoing	<b>SHPO Staff</b> ksks.taxcredits@ks.gov
<b>Rural Rental Housing Program</b> USDA-RD	Loan	Developers	Provides financing for affordable multi-family rental housing for low-income, elderly, or disabled individuals and families in eligible rural areas. Eligible activities include buying and improving land and infrastructure.	Varies	Ongoing	<b>Midwest Regional Mailbox</b> MFHFODMidwest @usda.gov



# HOUSING REDEVELOPMENT INITIATIVE

## Reimagining Vacant Buildings as New Housing Opportunities

Across Kansas, communities are facing growing challenges related to housing — from aging, deteriorating, and vacant structures to a shortage of new homes being built fast enough to meet local needs.

The Kansas Department of Commerce is launching a statewide initiative to identify vacant or underutilized buildings that may be suitable for redevelopment into housing units. This initiative offers communities a proactive opportunity to repurpose existing structures, attract investment, and support local housing needs.

These structures offer the potential to provide the fastest path to creating new units, preserving historic character, and revitalizing community centers. While restoring and repurposing existing buildings may offer opportunities on a shorter timeline, **developing vacant land is also vital to long-term community growth — especially in rural areas.** To support this effort, we are also taking submissions for sites that have been designated by a community for future housing developments.

### How to Participate

1. Identify a vacant lot or a vacant/underused building in your community
2. Gather basic property details (i.e., location, ownership, size, condition)
3. Submit the information using our online form

[SUBMIT VACANT LAND](#)[SUBMIT A BUILDING](#)[FAQ](#)[QUESTIONS](#)



# Schools

**Coffeyville, KS**

Kansas State University Extension

- I saw an elementary, middle school, and high school. I noted how well maintained and attractive they were.
- The facilities and grounds appeared well-maintained and the grass mown.
- There is an early learning center, several childcare facilities, elementary, middle, high school, and community college.



Visitors looked on Niche.com and GreatSchools.org to find information about the schools.

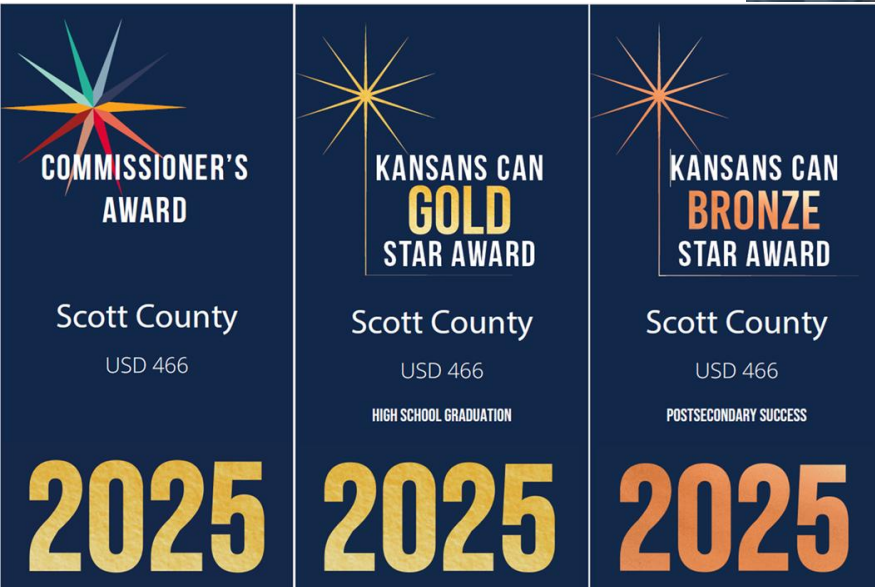
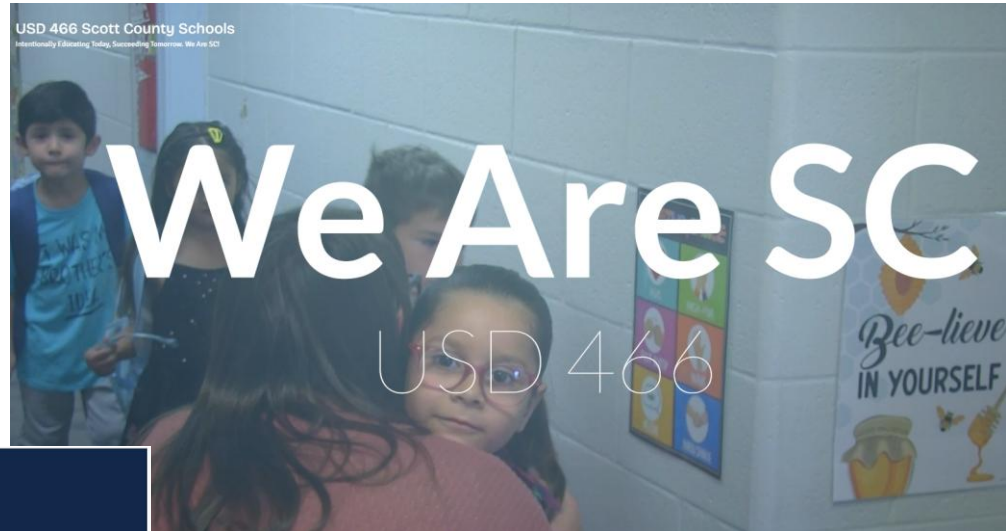
Coffeyville Public Schools <https://www.cvilleschools.com/>

The screenshot shows the homepage of the Coffeyville Public Schools website. At the top left is the school's logo, a yellow funnel with the text "COFFEYVILLE" above it and "USD 445" below it. To the right of the logo is the text "Coffeyville Public Schools" and the tagline "Learn. Lead. Succeed." Below the logo and text are navigation links for "Parents", "Students", and "Staff", along with a "CONTACT US" button and a search icon. A dark purple navigation bar contains links for "About Us", "Academics", "Departments", "Safety Overview", and "Calendar". The main content area features a large video player showing a teacher in a red shirt interacting with two students, a boy and a girl. Below the video player is a white navigation bar with icons and labels for "JOBS", "MEALS & NUTRITION", "ONLINE REGISTRATION", "PARENT PORTAL", "BUDGET", and "STAFF DIRECTORY".

- The school website was comprehensive and business like.
- Academics
  - Includes curriculum and instruction definitions for each grade level
  - Career and Technical Education Pathways
  - LINC- alternative free online learning to get a high school diploma.
- Geared toward current students, parents, staff.
- Only 3 engaging photos on the front page with no diversity of ages or activities (academics, sports, drama, music, etc.)

“Potential Students” are an audience for your website.

TELL US: Why do you love your schools?



On the front page, Scott County Schools gives lots of great photos, good description of the types of school settings (traditional classroom or multiple teachers with electives.) and awards received.



# Childcare

**Coffeyville, KS**

Kansas State University Extension

## Comments:

- I noticed several childcare centers advertising for vacancies.
- There are several private childcare facilities as well as an early learning center operated by the school district for \$35/day for ages 6 weeks through 3 years.

### Montgomery County Data:

- **Extent Desired Capacity meets Potential Childcare need: 49%    46%**
- Contact [ks.childcareaware.org](https://ks.childcareaware.org) to access local childcare specialists.  
785-823-3343





# Faith & Religion

**Coffeyville, KS**

Kansas State University Extension

- There is an abundance of religious centers, at one point, it seemed there was one on every block.
- They appeared to be well taken care of.
- I did not notice faith-based service.









# Civic Organizations

**Coffeyville, KS**

Kansas State University Extension

- I saw the American Legion and Masonic Lodge while in town.
- On the Chamber website, I noticed Lions Club and Kiwanis.
- I did not see evidence of civic service except for the Historical Society which highlighted the Brown Mansion and Dalton Gang.

Saw the Community Foundation downtown.



## Senior Citizens Activity Center



Photo: Google Maps, Photo captured, October 2025  
Retrieved February 22, 2026



# Public Infrastructure & Services

**Coffeyville, KS**

Kansas State University Extension

- Wayfinding signs would be helpful to direct travelers to important areas like parks and city hall.
- The sidewalks are in rough shape throughout town. There is a mixture of brick and concrete surfaces that are broken up or overgrown and will either cause trip hazards or be un navigable in a wheelchair.
- Except for the railroad intersections, the streets are fine.
- We noticed playgrounds with ADA surfacing, but there was not a paved ADA walkway connecting to the parking areas.

- To get public information, you go upstairs, through glass doors to a counter in the City Clerk's office to get brochures and pamphlets.
- I was greeted in a friendly manner. I asked for the Landlord list, and they printed one for me.



# Fire, EMS and Police Services

- We noticed multiple fire stations throughout town. The equipment was staged nicely and looked well-maintained.
- We saw police/EMS responding to a call in a residential area.



Photo: Google Maps, Photo captured, October 2025  
Retrieved February 22, 2026

- We drove by but did not have time to go inside.

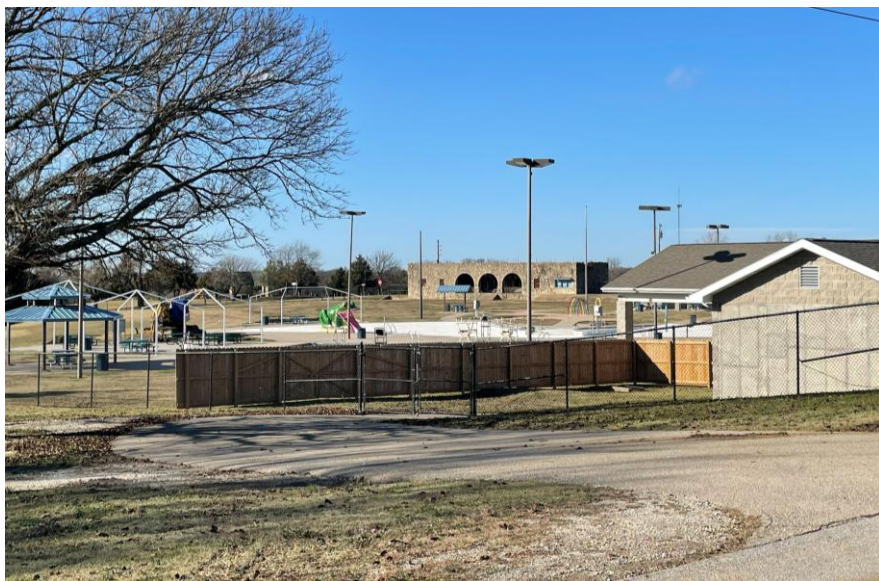


Photo: Google Maps, Photo captured, November 2022  
Retrieved February 22, 2026

- I had difficulty locating and finding parks without pulling up their locations on the internet. Even with the help, parks were not readily identified.
- The park near the Elementary School and Sherwin Williams building that has really interesting play structures. My child would love to play on this.
- There appeared to be a number of ballparks, sports complexes and at least one disc golf course.
- We saw several parks including one with a skatepark and accessible playground.

# City Parks









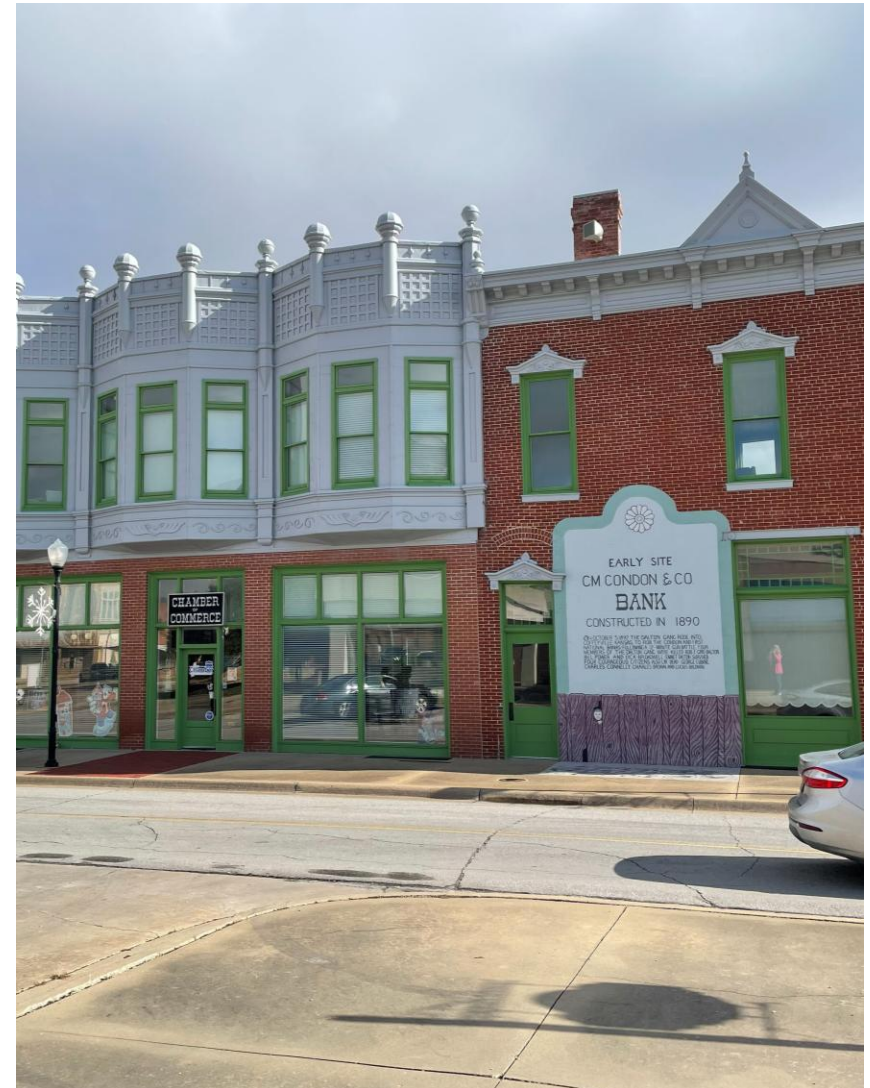
# Recreation & Tourism

**Coffeyville, KS**

Kansas State University Extension

## Well-Known for an attraction or event?

- Known from the Defender Day event.
- The locals told us to come back in October for the reenactment. They were good at telling and selling the story.
- The Interstate Fair and Rodeo, Dalton Defender Days, and the Hops Around Town event.



## Natural or Manmade features that have potential for drawing people?



- The wood sculpture park has the potential to be a draw, but it needs a more thoughtful layout. I was able to take a quick look and absorb the park. Finding a way to make the park engaging/interactive at the pedestrian level would help.
- The river is close by and could be an attractive outdoor feature for trails or a riverwalk.
- We visited the Brown Mansion, Dalton Defenders Museum, and Sculpture Garden.

## Is there a Visitor's Center?



- The Chamber Office was clear and identifiable.
- There was a sign on the office that advertised the sale of ICEEs inside. I thought that was a strange combination, but a community member mentioned the ICEE was created in Coffeyville. That is a fun story and needs to be highlighted.



## **What would bring you back?**

- Defender Day. I think my toddler would be fascinated with the action that was described by various community members.
- I would bring my wife back to tour the mansion and the museums. It would be fun to see the gunfight.
- There were no shops or restaurants that would entice me back.

- I liked the businesses I saw on the “Main Drags.” They appeared to be well-maintained and inviting and offered a diverse selection of services.
- I enjoyed talking with community members about Coffeyville and could tell there was a sense of place and belonging among them that I often do not see in other communities.
- This community has a truly unique identity with the Dalton Defender’s story, and the community excels at leaning into the story. My guess is that I could ask anyone downtown to tell the story and they could do it. I normally don’t care about town history, but they made the story engaging based on the built environment.

- For a city with only 8,800 population, the industrial base with the refinery and industrial park was huge. They have a tremendous amount of industry with what appears to be a strong educational system as far as community colleges and trade programs to help supply workforce.
- The downtown has some great potential with an interesting layout if they can get more of the buildings activated with businesses.
- The people were so friendly! At each place we entered, we were greeted in a very welcoming manner. And, the staff provided historical information, descriptions of attractions, and recommendations about things to do and see.

- Housing quality and availability is the challenge that sticks out the most to me.
- In my opinion, the biggest challenges would be the large number of dilapidated housing and vacant businesses that need to be torn down to prevent further blight and make room for new infill development.

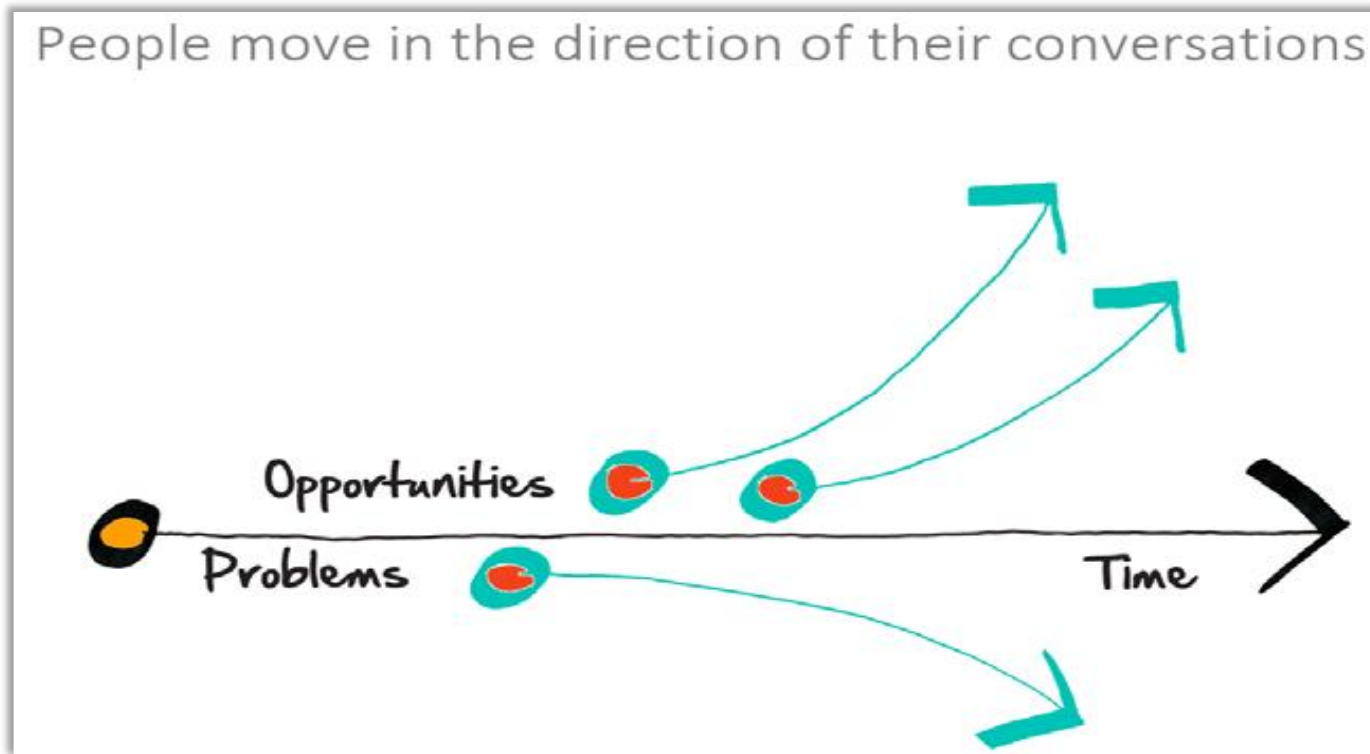
## What will you remember?

- The difficulty in locating parks and the seemingly deteriorated housing conditions of the community.
- I truly enjoyed the museums and Brown Mansion and will remember Coffeyville's history because of my visit. I may even trek back out to see the Dalton Gang robbery reenactment at some point.
- The large number of dilapidated homes and businesses in town.

Amount of money spent by visitors: \$268

## What did you hear?

## What will we do?



## Youth Community Perceptions <https://bit.ly/ks-ycp>

- Youth-Based Community Assessment.
- Gives communities insights on how youth see their community.
- Creates opportunities for youth voices in the community.
- Allows youth to become involved in local government and community process




## Grant Writing Classes and Support

### Contact

[KSECV@ksu.edu](mailto:KSECV@ksu.edu)


to participate.



**K-STATE**  
Research and Extension

**4 GRANT WRITING RESOURCES**

K-State Research and Extension provides resources to help you write and submit successful grant proposals to improve lives, livelihoods and communities across Kansas.

- 1 GRANT WRITING CLASSES**  
Class alum reported receiving more than \$100 million in successful grants. Discover in-person and online classes at [ksre-learn.com/community-events](https://ksre-learn.com/community-events). 
- 2 A PROFESSIONAL LEVEL GRANT DEVELOPMENT AND MANAGEMENT COURSE**  
An 8-week course dedicated to helping you complete a fundable proposal. Register for the course at [ksre-learn.com/GrantWriting](https://ksre-learn.com/GrantWriting). 
- 3 SUPPORT BY K-STATE RESEARCH AND EXTENSION PROFESSIONALS**  
Our professionals will search K-State's subscription grant databases to suggest grants appropriate for your project. Our staff also offers reviewing of grant proposals.
- 4 GRANT WRITING RESOURCES**  
We have excellent resources for those wanting to bring more to their communities. We can connect you with contract writers to help shape your proposals.

For more information about our grant writing resources, email [KSRECV@k-state.edu](mailto:KSRECV@k-state.edu).

Kansas State University Agricultural Experiment Station and Cooperative Extension Service  
K-State Research and Extension is an equal opportunity employer and provider  
23227 | Updated Apr. 2025

## Small Business and Community Development

- **First Friday e-Calls 9:30-10:30 am**

*Connecting small businesses and communities with the resources to make them successful.*

– Register here: <https://ksre-learn.com/ecall>

– Previous calls are recorded at

<https://ksre-learn.com/entrepreneurship>

- Now people have a choice, and millions of them are planning to move.
- **“The pivot to remote work is the biggest, fastest transformation of the labor market since the World War II mobilization.”**
- **Major cities will see the biggest out-migration:** 20.6% of those planning to move are currently based in a major city.
- **People are seeking less expensive housing:** Altogether, **more than half** (52.5%) are planning to move to a house that is significantly more affordable than their current home.
- **People are moving beyond regular commute distances:** 54.7% of people are moving over two hours away or more from their current location, which is beyond daily or even weekly commuting distances for most.

- Kansas Remote Online Initiative
  - Certified Remote Work Professional
  - Certified Remote Work Leader
- *Certification in 4-weeks*
- Monthly Classes: <https://kansasremotework.com/>



**REMOTE  
ONLINE  
INITIATIVE™**



**K-STATE**  
Research and Extension

**WORK FROM ANYWHERE**

## Rural Grocery/KS Healthy Food Initiative

- **Goal:** Increase access to affordable, healthy food and to improve the health and economic development of Kansans and their communities.
- Technical assistance and financing to develop new or renovate fresh food retail in underserved communities throughout Kansas.

<http://kansashealthyfood.org/>

